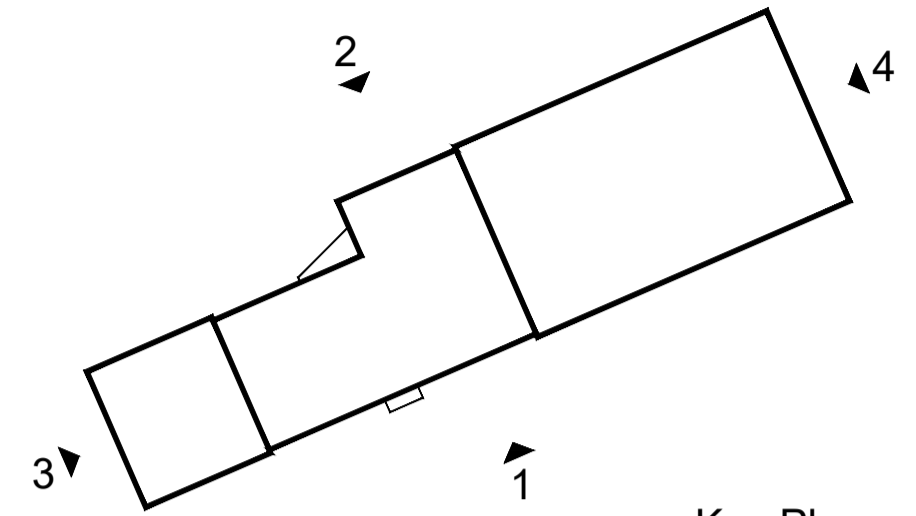
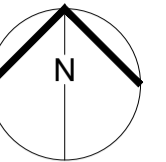


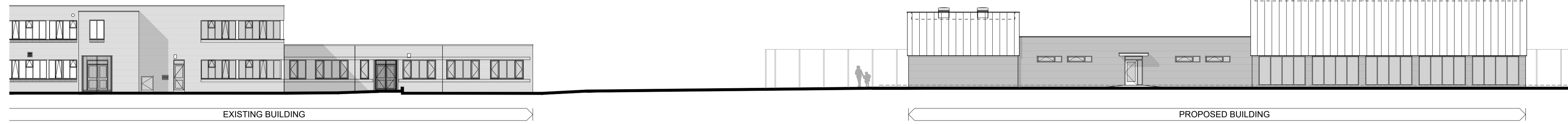
NOTES



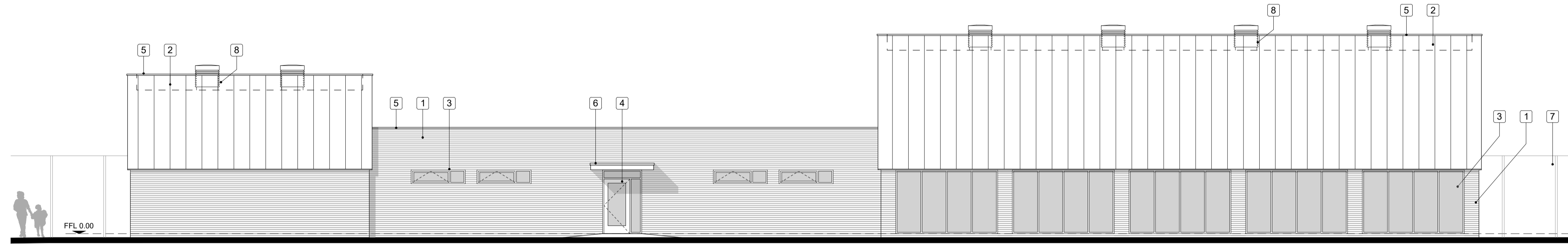
Key Plan
(NTS)

KEY:

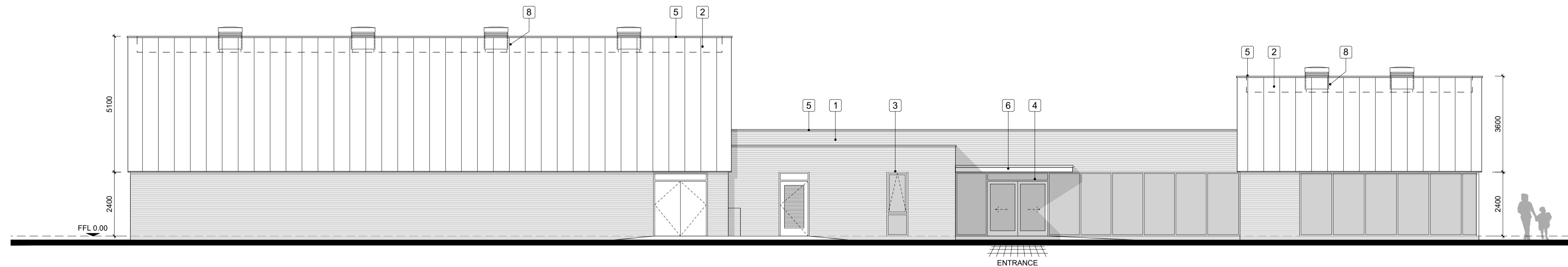
- 1 Brickwork, colour TBC
- 2 Vertical panel cladding, colours TBC
- 3 Aluminium double glazed windows, colour dark grey
- 4 Aluminium double glazed doors, colour dark grey
- 5 Aluminium fascias, parapets, gutters and rainwater downpipes, polyester powder coated, colour dark grey
- 6 Entrance canopy, aluminium polyester powder coated, colour TBC
- 7 Existing weld mesh fence 3m high
- 8 Natural air vents, polyester powder coated, colour dark grey



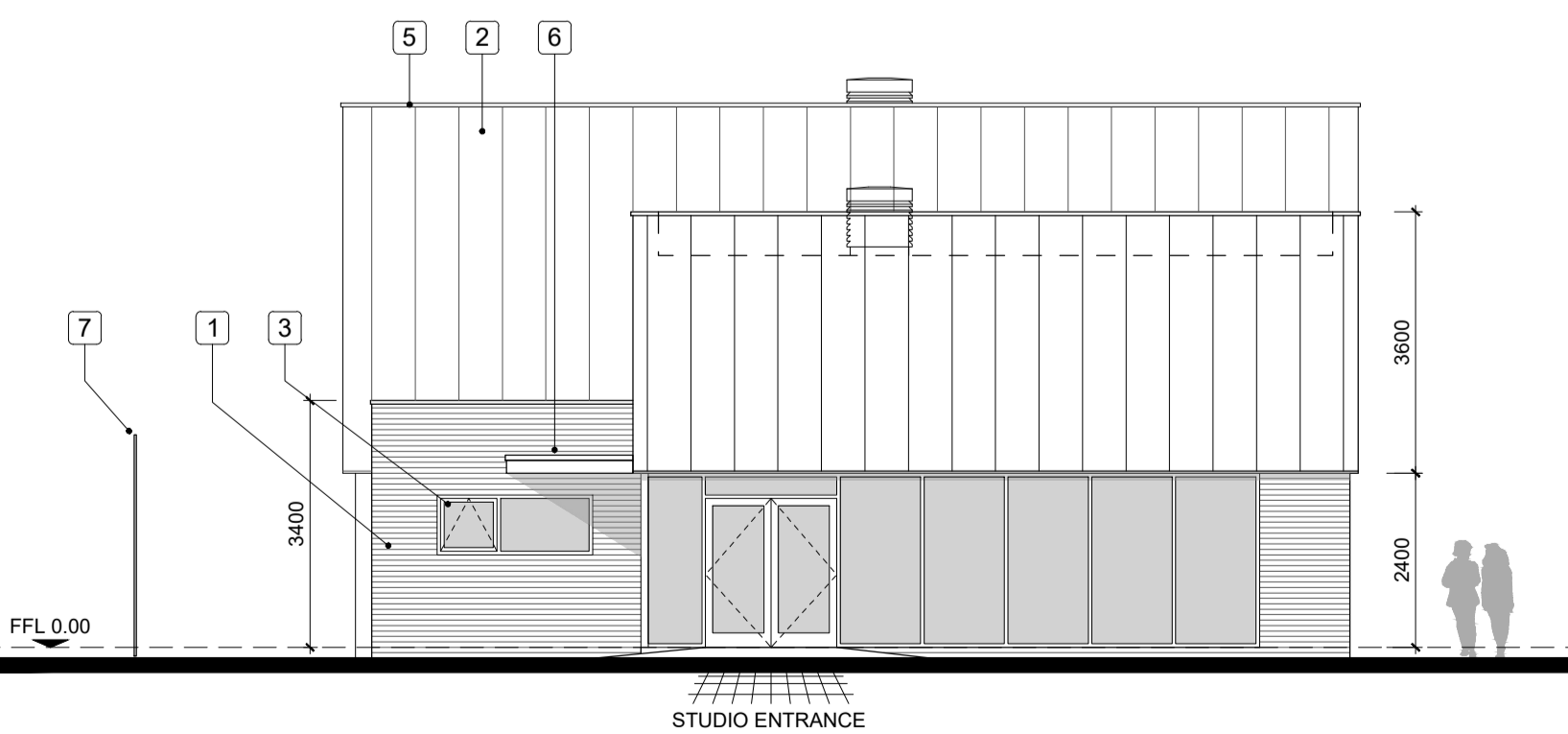
1 South-East Site Elevation
1:200



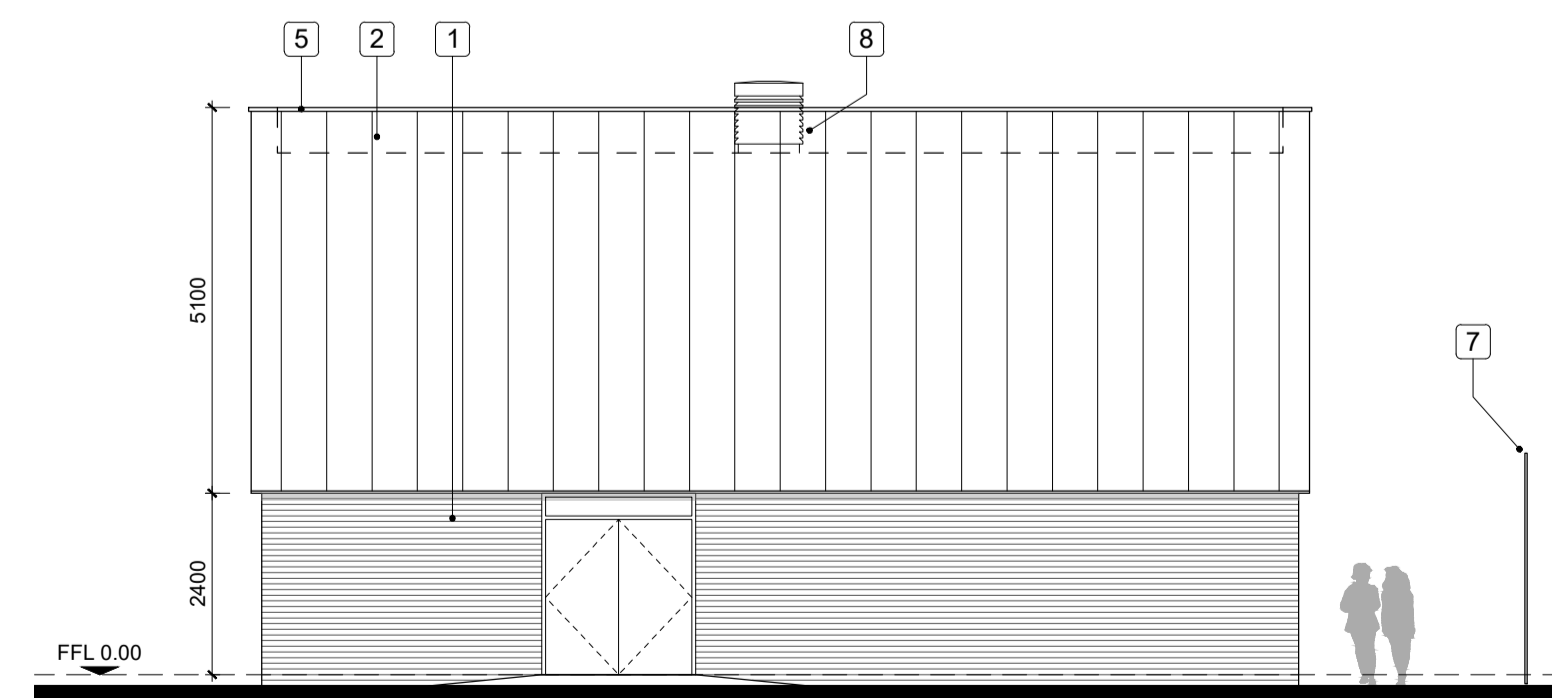
1 South-East Elevation
1:100



2 North-West Elevation
1:100



3 South-West Elevation
1:100



4 North-East Elevation
1:100

Rev	Description	Dm	Chk	Date
Drawing Status PRELIMINARY <input type="checkbox"/> APPROVAL <input checked="" type="checkbox"/>				
INFORMATION <input type="checkbox"/> TENDER <input type="checkbox"/> CONSTRUCTION <input type="checkbox"/>				
 Stockton-on-Tees BOROUGH COUNCIL Big plans, bright future				
Economic Growth & Development Services Director of Economic Growth & Development Richard McGuckin B.Eng., C.Eng., F.I.C.E. P.O. Box 229, Kingway House, Billingham, TS23 2YL Tel: 01642 393939, email: egds@stockton.gov.uk				
Project Conyers School Green Lane, Stockton-on-Tees New Hall				
Content Proposed Elevations				
Date July 2018		Dwg No. A10728 - 106		
Drawn DA	Checked MS	Scales @ A1 1:200 / 1:100	Rev -	